



BarcelonaTurisme

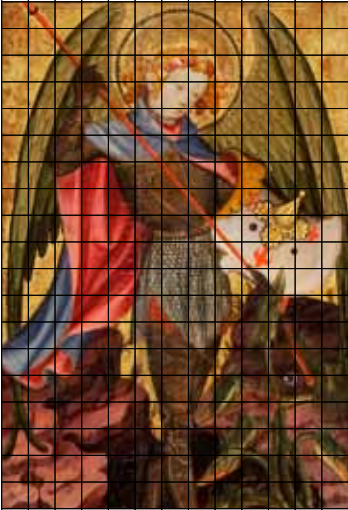
April

barcelonaturisme.cat



Swan Lake on Ice

at Barcelona Teatre Musical



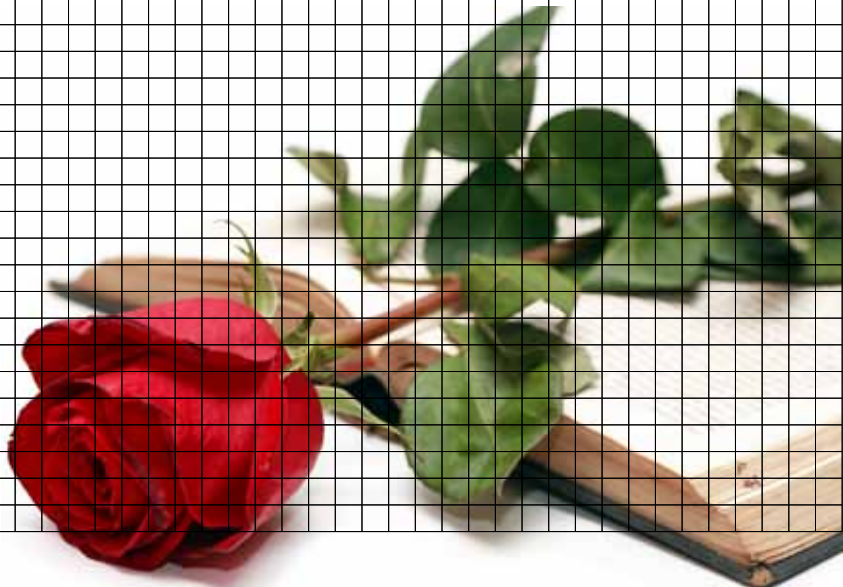
Attributed to Joan Mates, *Altarpiece of Saint Michael the Archangel*,
First quarter of 15th Century. © MNAC. Photographers: Calveras/Mérida/Sagrera

Catalonia 1400. The International Gothic Style

at the Museu Nacional d'Art de Catalunya

Sant Jordi

23rd April



Don't miss this!

April 2012

In BCN



Sant Jordi

Sant Jordi, or Saint George, is the patron saint of Catalonia and on 23rd April we celebrate Sant Jordi's Day, which is also Book and Rose Day. The main streets of Barcelona, and all the towns and villages in Catalonia, are lined with stalls selling books and roses which lend the day a festive, cheerful touch. Barcelona also plays host to a variety of cultural events in literary settings that will transport you to the imaginary world of books. People give each other roses and books as a token of love and a desire for prosperity. In 1926, Book Day was held for the first time on Saint Jordi's Day to commemorate the birth of Miguel de Cervantes and the death of Shakespeare.

www.bcn.cat

Catalonia 1400. The International Gothic Style

Until 15th July 2012



Missal of Saint Euligi, The Last Judgement, 1467, Barcelona Cathedral Chapter, Chapter Archive © Guillem F-H

The Museu Nacional d'Art de Catalunya presents its first major exhibition about one of the most creative periods in the history of Catalan art which spans the period in European Gothic art known as the "International Gothic style". This period, which began at the end of the 14th century and lasted until the late 15th century, gave us some of the most outstanding Catalan artists of all time, who have earned a well-deserved place in the history of European art, including Lluís Borrassà, Rafael Destorrents, Pere Joan and Bernat Martorell. *Catalonia 1400* brings together great masterpieces, such as the four panels with narrative scenes from Bernat Martorell's *Retable of Saint George*, which is now kept in the Louvre, as well as other complete altarpieces by Lluís Borrassà, Joan Mates, Martorell and Jaume Ferrer. The exhibition also includes a selection of sculptures and examples of silversmithing, goldsmithing and embroidery.

www.mnac.cat



Barcelona Ladies Open 2012

From 9th to 15th April 2012

The best in women's tennis returns for its date in Barcelona. The WTA Barcelona Ladies Open reaches its 10th year with a new management team with the former tennis player and director of renowned world tennis tournaments, Sandra Reichel, at the helm. The event, with its packed programme, is reborn with the finest Spanish women's tennis players of the moment and an international line-up that will guarantee thrilling entertainment. The tournament will once again be held at the Centre Municipal Tennis Vall d'Hebron.

www.barcelonaladiesopen.com

Barcelona Open Banc Sabadell 60th Conde de Godó Trophy

From 21st to 29th April 2012

This clay tournament, which has attracted the top tennis players of the past six decades, will be held on the courts of the Reial Club de Tennis Barcelona 1899. This year's favourite to carry off the title is the

Mallorcan player Rafael Nadal, who won his sixth trophy in the tournament with his victory in 2011. Some of the top tennis players of the moment are expected to play.

www.barcelonaopenbancsabadellatlantico.com



Pastora Galván & La Susi at the Tablao Cordobés

Until 11th April 2012

A show that is included in the second part of the "Flamenco Aristocracy" series. The first part was presented at the Tablao Cordobés in January 2010. It features two great performers: the legendary singer, or *cantaora*, La Susi, and the dancer, or *bailaora*, of the moment, Pastora Galván.

www.tablaocordobes.com



Swan Lake on Ice at Barcelona Teatre Musical

17th-29th April 2012

The Imperial Ice Stars present the captivating fairy tale *Swan Lake on Ice*, with wonderful music by Tchaikovsky. The show will thrill the public with the acrobatic feats and sublime skills of the dancers. The production offers Olympic-level skating in a theatre setting: breathtaking triple somersaults, awe-inspiring gymnastics, death-defying spins, double and triple axels and spectacular high-speed leaps. This is one of the world's leading companies, specialising in staging plays on ice in the intimacy of a theatre. The performance features 25 skaters who are world and Olympic champions and have amassed more than 200 medals between them.

www.letscompany.com



23rd Barcelona Guitar Festival

Until May 2012

The Barcelona Guitar Festival, which is now in its 23rd year, has established itself as one of the city's key musical events. With an eclectic and cosmopolitan programme of concerts, it features an important line-up of the foremost guitarists. Throughout April, the festival will offer performances by some of the world's top names, The Waterboys, who return to Barcelona to play their extensive back catalogue of hits from the past 30 years and to present their latest record. The festival will also be a showcase for some top performers in Spanish, including the muse of indie music, Christina Rosenvinge, and in Catalan, such as the great Marina Rossell and Els Amics de les Arts.

www.festivalguitarrafcn.com



Epidemic! at CosmoCaixa

The exhibition explains the causes of different diseases and their biological cycles, but also provides examples from the world of art, literature, music and film. It features an extensive selection of historic pieces, books and prints and some 85 objects loaned by prestigious institutions from Spain and abroad, which together with interactive and multimedia displays, audiovisuals and games, will take you on an extremely stimulating visit.

www.laCaixa.es/ObraSocial

Temporary exhibitions and festivals

April 2012

In BCN

Arxiu Fotogràfic de Barcelona
Rephotographing Barcelona with Mark Klett
Until 19th May 2012
This exhibition brings together 80 works, some of them by the prestigious North-American photographer Mark Klett.
H: Mon-Sat: 10am-7pm

Arxiu Històric de la Ciutat de Barcelona
Fashion Illustrations, 1914-1935. Luxury and Modernity
Until 30th April 2012
The exhibition focuses on fashion illustrations used in advertising from a glorious period in local graphic design.
H: Mon-Fri: 9am-8.30pm; Sat: 9am-1pm

CaixaForum
Delacroix (1798-1863)
Until 20th May 2012
Exhibition co-organised with the Louvre Museum that features more than 130 works by this great French painter.

Goya. Light and Shadow
Until 24th June 2012
The exhibition brings together 100 paintings, drawings and prints to provide a chronological overview of the work of this artistic genius.

Bestué-Vives. Actions in the Universe. "la Caixa" Foundation Contemporary Art Collection
Until 29th April 2012

Shadows and Truth. A Selection of Works from the Central Bank of the Republic of Turkey
Until 14th April 2012

Windows to the World (short films)
Until 6th May 2012
H: Mon-Fri: 10am-8pm; Sat and Sun: 10am-9pm

Can Framis
Antoni Puig. The Art of Collecting Season
Until 22nd April 2012
Season dedicated to the collector and businessman Antoni Puig.

Laurent Jiménez Balaguer. The Emergence of the Sign
Until 22nd July 2012
H: Tue-Sat: 11am-6pm; Sun: 11am-2pm

Centre de Cultura Contemporània de Barcelona (CCCB)
Visa pour l'Image. Perpignán in Barcelona
Until 28th May 2012
The exhibition presents a selection of four of the shows that were part of the latest *Visa pour l'Image*: the leading international photojournalism festival held in Perpignan.

Global Screen
Until 27th May 2012
Tue-Sun: 11am-8pm

CosmoCaixa
Epidemic!
Until 10th February 2013
The exhibition explains the causes of different diseases, their biological cycles and how epidemics have shaped the history of mankind.
H: Tue-Sun: 10am-8pm

Disseny Hub Barcelona
DHUB Montcada
The Senses of Machines. Interaction Laboratory (Espai 1)
Until 31st August 2012
The exhibition takes an experimental and educational look at the relationship between man and machine.
H: Tue-Fri: 11am-7pm; Sat, Sun and public holidays: 11am-8pm

Espais Volart
Josep Cisquella. Please touch it (Espai Volart)
Until 1st April 2012

Romà Vallès. Memory (Espai Volart 2)
Until 29th April 2012
The exhibition shows the parallels between the artist's early and current works consisting of collage, drawing and photography.
H: Tue-Fri: 5pm-8.30pm; Sat: 11am-2pm, 5pm-8.30pm; Sun: 11am-2pm

Fundació Alorda-Derksen International Contemporary Art
April 2012
The exhibition features current works by world-renowned artists, including the members of the provocative YBA (Young British Artists) group:
H: For information about opening times, please call tel. 932 726 250

Fundació Joan Miró
Joaquim Gomis: From the Oblique Gaze to Visual Narration
20th April-3rd June 2012
The exhibition shows one of the most important aspects of Joaquim Gomis' work: the creation of *fotoscops*, the name given by Gomis to the series of photography books he produced with Joan Prats. ▽



© Heirs of Joaquim Gomis. Fundació Joan Miró, Barcelona

Alex Reynolds
Until 29th April 2012
H: Tue-Sat: 10am-7pm; Thu: 10am-9.30pm; Sun and public holidays: 10am-2.30pm

Fundació Suñol
Sculpture / Object. Collection
Until 1st September 2012
A selection of some of the most important works from the Foundation's collection by artists including Alexander Calder and Eduardo Chillida.

The Dwelling Life of Man. Martin Z. Margulies Collection
Until 16th June 2012
Exhibition of photographs co-organised by the Fundació Foto Colectània.

Joana Cera. Without Variable Measurement
Until 28th April 2012

H: Mon-Sat: 4pm-8pm; 6th and 9th April closed

Fundació Antoni Tàpies
Antoni Tàpies. Collection 2
Until 22nd April 2012
A new selection of works by Antoni Tàpies from the foundation's holdings, spanning 1940 to the present day.

Antoni Tàpies. Collection 3
28th April-10th June 2012

Xavier Le Roy "Retrospective"
Until 22nd April 2012
An exhibition conceived

as a choreography of actions that will be carried out by performers for the duration of the exhibition.
H: Tue-Sun: 10am-7pm

La Pedrera de CatalunyaCaixa > Artigas. Man of Fire
17th April-2nd September
The exhibition brings together more than 150 pieces spanning the long career of Josep Llorens Artigas, one of the leading names in contemporary European ceramics.
H: Mon-Sun. 9am-8pm

Museu d'Art Contemporani de Barcelona (MACBA)
Volume! Works from the Collections of the "la Caixa" Foundation and the MACBA
Until 23rd April 2012
An exhibition interpreting the transition from the 20th to the 21st century based on the paradigm shift in art in terms of materials, sensory aspects and programming.

Muntadas. Between the Frames: The Forum (1983-1993)
Until 20th May 2012
An installation that provides an overview of the art world in the 1980s.

Barcelona International Centre of Photography (1978-1983)
Until 20th May 2012
The exhibition brings together more than 600 photographs, including images of working-class districts in Barcelona and their inhabitants.

Aleksandr Sokurov. The Military Series
Until 20th May 2012

Jacinto Esteva. Far from the Trees
Until 20th May 2012

H: Mon-Fri: 11am-7.30pm; Sat: 10am-8pm; Sun and public holidays: 10am-3pm

Museu Barbier-Mueller d'Art Precolombí
The Inca Trail. The Past of the Andes
Until 12th January 2013
The exhibition looks in depth at the culture and history of this pre-Columbian civilisation.
H: Tue-Fri: 11am-7pm; Sat and Sun: 11am-8pm; public holidays: 11am-3pm



Artigas in his atelier of Callifa, decade of the 60s

Museu Blau
El Hierro: the Hidden Eruption

Until 21st April 2012
This exhibition brings visitors closer to the world of volcanoes and illustrates how the eruption on the island of El Hierro was predicted and monitored.
H: Tue-Fri: 10am-7pm; Sat-Sun: 10am-8pm

Museu Europeu d'Art Modern (MEAM)
Figurative Contemporary Art of the 21st Century

April 2012
The exhibition brings together some 200 paintings and 30 figurative sculptures by artists from around the world.
H: Tue-Sun: 10am-7pm

MUHBA El Call
Solomon ben Adret (1235-1310). The Triumph of Orthodoxy

Until 31st December 2012
The leader of Judaism in Catalonia, Solomon ben Adret was appointed chief rabbi of Barcelona and served three kings as the head of Jewish Affairs.
H: Tue-Fri: 11-14 h; Sat-Sun: 11-19 h; public holidays: 11-14 h

MUHBA Monestir de Pedralbes
Murals under the Magnifying Glass. Paintings from the Chapel of Sant Miquel

Until 31st December 2012
H: Tue-Fri: 10am-5pm; Sat: 10am-7pm; Sun: 10am-8pm; public holidays: 10am-2pm

MUHBA Plaça del Rei
Contemporary MUHBA

April 2012
The exhibition presents a series of works that will form the basis of the museum's future contemporary collection.
H: Tue-Sat: 10am-7pm; Sun: 10am-8pm; public holidays: 10am-2pm

Museu de Ceràmica
Clay: Design & Creation

Until 24th September 2012
Exhibition about the design and transformation of traditional objects and experimentation with and the creation of new designs using clay.
H: Tue-Sun: 10am-6pm

Museu de Badalona
Baetulo, Roman City

April 2012
The exhibition shows us what the everyday objects used in Badalona more than 2,000 years ago were like.
H: Tue-Fri: 5pm-8pm; Sat & Sun: 10am-2pm; 6th April closed

Museu Egipci
Fashion and Beauty in Ancient Egypt

Until 20th July 2012
An exhibition tracing 3,000 years of fashion in the land of the Nile and a tribute to the aesthetics and refined taste of the Ancient Egyptians in caring for the body.
H: Mon-Sat: 10am-8pm; Sun: 10am-2pm

Museu d'Idees i Invents de Barcelona (MIBA)
TBO's Big Inventions

April 2012
An exhibition of 13 original cartoons by Ramon Sabatés.
Tue-Fri: 10am-7pm;

Sat: 10am-8pm; Sun and public holidays: 10am-2pm

Museu del Rock
Rock Photographs by Juan Pérez-Fajardo

Until 29th April 2012
Exhibition of photographs that show the long career of Juan Pérez-Fajardo as a concert photographer.
H: Tue-Sun: 10am-10pm

Museu de la Moto de Barcelona

50th Anniversary of the Montesa Impala
Until June 2012
A tribute to this legendary bike created in 1962 and the winner of a number of international design awards.
H: Mon: 4pm-8pm; Tue-Sat: 10am-2pm 4pm-8pm; 16th April - 12th; May: free guided tours on Thursdays at 5pm

Museu Nacional d'Art de Catalunya (MNAC)

Gods and Myths of Antiquity. Evidence of Coins in Hispania
Until 17th March 2013
An exhibition looking at the divinities, myths and cults of the inhabitants of the Iberian Peninsula from the 5th century BC to the arrival of the Visigoths.

Catalonia 1400. The International Gothic Style

Until 15th July 2012
This exhibition brings together masterpieces by major Catalan artists including Bernat Martorell, Lluís Borrassà and Rafael Destorrents.
H: Tue-Sat: 10am-7pm; Sun and public holidays: 10am-2.30pm

Museu Olímpic
Joan Antoni Samaranch
The Mediterranean Games

Until 29th April 2012
An exhibition featuring a series of objects, documents and photographs of the 1955 Mediterranean Games.
H: Tue-Sat: 10am-8pm; Sun and public holidays: 10am-2.30pm

Museu Picasso
A Collage before Collage

Until 3rd June 2012
The exhibition looks in depth at the reasons that led Picasso to invent collage sometime in spring 1912.
H: Tue-Sun: 10am-8pm

Palau Güell
Restoring the Palau Güell

April 2012
This exhibition reveals the complexity of the large-scale restoration of the Palau Güell.
H: Tue-Sun: 10am-8pm

Palau Robert
Pilarín Bayés, 50 Years Drawing for Everyone (Gallery 2)

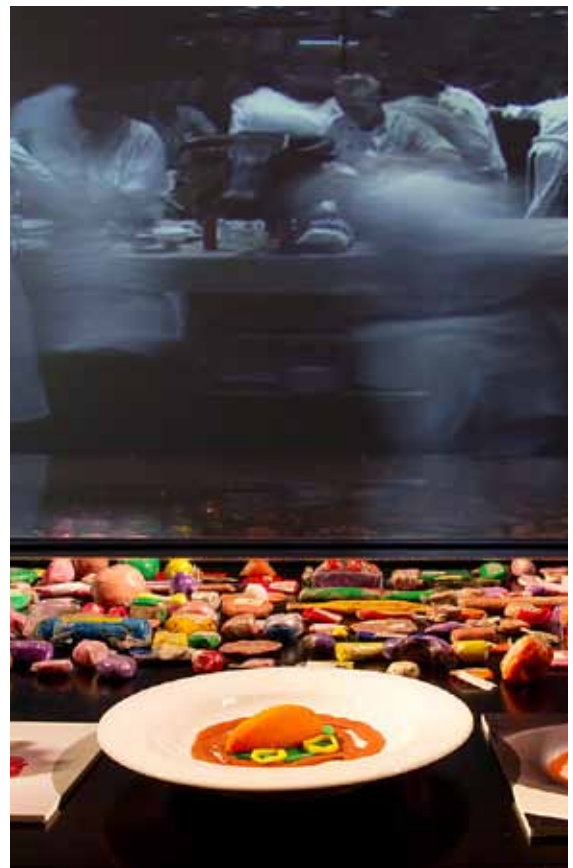
17th April-11th September 2012

Xavier Montsalvatge Centenary. 1912-2012 (Gallery 2)

Until 10th June 2012

Ferran Adrià and El Bulli. Risk, Freedom and Creativity (Gallery 3)

Until 3rd February 2013
An exhibition dedicated to the creative genius of Ferran Adrià, the most influential chef of the late 20th and early 21st centuries. ▼



Women Poets (Gallery 4)

Until 29th April 2012

Pirineu Comtal: A Journey around the Birth of Catalonia (Garden)

Until 22nd April 2012
A photographic exhibition of the landmarks, museums and medieval

ensembles in the northern counties of Catalonia.

H: Mon-Sat: 10am-7pm; Sun and public holidays: 10am-2.30pm

Festivals

23rd Barcelona Guitar Festival

Until late May 2012
www.festivalguitarabcn.com

Miscellaneous

Casa Batlló

The Casa Batlló, an unmissable modernista landmark, invites you on a journey inside Gaudí's architectural gem.
H: Mon-Sun: 9am-8pm (audioguide included)

Palau Güell

A tour of the building designed by Antoni Gaudí as the private residence of the Güell family in the late 19th and early 20th centuries.
H: Tue-Sun: 10am-8pm

Last admissions: 7pm (audioguide included)
www.palauguell.cat

Bohemian Barcelona

Discover some of Barcelona's *modernista* bars on this night-time itinerary.
H: Fri: 9.30pm (Spanish) and Sat: 7.30pm (English)
www.itineraplus.com/barcelonabohemia

Sunday 01

10.30am-12 noon
Make a Bookmark
Family workshop
Poble Espanyol
www.poble-espanyol.com

11.15am
Sardanes
Catalan popular dance
Pl. de la Catedral
www.bcn.cat

12 noon
Castells
C. de Joan Güell
www.castellersdebarcelona.cat

12 noon
Curious George
Film for the family
CaixaForum
www.laCaixa.es/ObraSocial

12.30pm
Pinocchio, the Wooden Boy
Family puppet show
Poble Espanyol
www.poble-espanyol.com

6pm
Coriolà
Plays (Cat.)
Teatre Lliure Montjuïc
www.teatrelliure.com

6pm
En la luna
Plays (Span.)
Teatre Lliure Gràcia
www.teatrelliure.com

6pm
Rei i senyor
Plays (Cat.) / TNC
www.tnc.cat

8pm & 10pm
No One
Jazz / Jamboree
www.masimas.com/jamboree

9pm
Lia Rodrigues Companhia de Danças
Dance / Mercat de les Flors
www.mercatflors.cat

9pm
Manuel González
Spanish guitar
Basilica of Santa Maria del Pi
www.poemasl.es

9.30pm
Grand Flamenco Gala
Flamenco
Palau de la Música Catalana
www.operافلamenco.com

Date and time t.b.c
FC Barcelona - Athletic Club
Sport. Football / Camp Nou
www.fcbarcelona.cat

Monday 02

12 noon
African Stories and Songs
Family activity
CaixaForum
www.laCaixa.es/ObraSocial

8pm
WTF Jam Session
Jazz, funk, hip-hop / Jamboree
www.masimas.com/jamboree

8.30pm, 9.30pm & 10.30pm
Son de aquí
Flamenco / Tarantos
www.masimas.com/tarantos

9pm
Varna Staatsoper Symphony Orchestra
Classical music
Palau de la Música Catalana
www.palaumusica.cat

10pm
Pedro J. González
Spanish guitar
Basilica of Santa Maria del Pi
www.poemasl.es

Tuesday 03

8pm & 10pm
Paulinho Lemos
Bossa nova / Jamboree
www.masimas.com/jamboree

8.30pm
Davis Symphony Orchestra (University of California)
Classical music
Palau de la Música Catalana
www.palaumusica.cat

8.30pm, 9.30pm & 10.30pm
Chanela
Flamenco / Tarantos
www.masimas.com/tarantos

8.45pm
FC Barcelona - AC Milan
Sport. Football / Camp Nou
www.fcbarcelona.cat

Wednesday 04

7pm
Ópera y flamenco
Flamenco / Teatre Poliorama
www.operافلamenco.com

8pm
Collegium Vocale Gent Choir and Orchestra
Classical music
Palau de la Música Catalana
www.palaumusica.cat

8pm
Rei i senyor
Plays (Cat.) / TNC
www.tnc.cat

8pm & 10pm
Star Wood Band
Jazz / Jamboree
www.masimas.com/jamboree

8.30pm
Coriolà
Plays (Cat.)
Teatre Lliure Montjuïc
www.teatrelliure.com

8.30pm, 9.30pm & 10.30pm
A media luz
Flamenco
Tarantos
www.masimas.com/tarantos

8.45pm
David y Sara
Plays (Span.) / Teatre Gaudí
www.teatregaudibarcelona.com

Thursday 05

10am
La ruta de la sal. Mediterranean High Seas Regatta Barcelona-Formentera
Sport. Sailing
www.larutadelasal.com

8pm
Rei i senyor
Plays (Cat.)
Teatre Nacional de Catalunya
www.tnc.cat

8pm & 10pm
Juliane Heinemann
Jazz / Jamboree
www.masimas.com/jamboree

8.30pm
Coriolà
Plays (Cat. Span. & Eng. subtitles)
Teatre Lliure Montjuïc
www.teatrelliure.com

8.30pm, 9.30pm & 10.30pm
A Song at Dawn
Flamenco / Tarantos
www.masimas.com/tarantos

9pm
Xavier Coll
Spanish guitar
Palau de la Música Catalana
www.poemasl.es

Friday 06

12 noon
African Stories and Songs
Family activity
CaixaForum
www.laCaixa.es/ObraSocial

6pm
Klezmer Trio - Youkalis
Music
Museu Europeu d'Art Modern
www.meam.es

7pm
Ópera y flamenco
Flamenco / Teatre Poliorama
www.operافلamenco.com

8pm
Rei i senyor
Plays (Cat.) / TNC
www.tnc.cat

8pm & 10pm
Elkano Browning Cream
Jazz / Jamboree
www.masimas.com/jamboree

8.30pm
Coriolà
Plays (Cat.)
Teatre Lliure Montjuïc
www.teatrelliure.com

9pm
Famous Opera Choruses
Music. Opera
Palau de la Música Catalana
www.palaumusica.cat

Saturday 07

12 noon
The Wild Thornberrys
Film for the family / CaixaForum
www.laCaixa.es/ObraSocial

8pm & 10pm
Zayas
Jazz / Jamboree
www.masimas.com/jamboree

6pm & 10pm
Coriolà
Plays (Cat. Span. & Eng. subtitles)
Teatre Lliure Montjuïc
www.teatrelliure.com

8.30pm, 9.30pm & 10.30pm
Moments from the Tablao
Flamenco / Tarantos
www.masimas.com/tarantos

9pm
Manuel González
Spanish guitar
Palau de la Música Catalana
www.poemasl.es

9.15pm
Grand Flamenco Gala
Flamenco / Teatre Poliorama
www.operافلamenco.com

9.30pm
Rei i senyor
Plays (Cat.) / TNC
www.tnc.cat

Sunday 08

10.30am-12 noon
Make a Bookmark
Family workshop / Poble Espanyol
www.poble-espanyol.com

11.15am
Sardanes
Catalan popular dance
Pl. de la Catedral
www.bcn.cat

12 noon
Duma
Film for the family / CaixaForum
www.laCaixa.es/ObraSocial

12.30pm
Pinocchio, the Wooden Boy
Family puppet show
Poble Espanyol
www.poble-espanyol.com

5.30pm
Ópera y flamenco
Flamenco
Palau de la Música Catalana
www.operافلamenco.com

6pm
Coriolà
Plays (Cat.) / Teatre Lliure Montjuïc
www.teatrelliure.com

6pm
Rei i senyor
Plays (Cat.) / TNC
www.tnc.cat

8pm
WTF Jam Session
Jazz, funk, hip-hop / Jamboree
www.masimas.com/jamboree

8pm & 10pm

Pete Robbins Transatlantic Quartet
Jazz
Jamboree
www.masimas.com/jamboree

9pm

Pedro J. González
Spanish guitar
Basilica of Santa Maria del Pi
www.poemasl.es

9pm

Mozart's Requiem
Classical music
Palau de la Música Catalana
www.palaumusica.cat

Date and time t.b.c

RCD Espanyol - Real Sociedad
Sport. Football
Estadi Cornellà - El Prat
www.rcdespanyol.com

Monday**09****11.15am**

Sardanes
Catalan popular dance
Pl. de la Catedral
www.bcn.cat

8.30pm, 9.30pm & 10.30pm

Son de aquí
Flamenco
Tarrantos
www.masimas.com/tarrantos

9pm

Barcelona 4 Guitars
Spanish guitar
Basilica of Santa Maria del Pi
www.poemasl.es

Tuesday**10****8pm & 10pm**

My Friend Marko
Jazz
Jamboree
www.masimas.com/jamboree

8.30pm

Orfeo Català Choral Season
Music. Choral
Palau de la Música Catalana
www.palaumusica.cat

8.30pm, 9.30pm & 10.30pm

Chanela
Flamenco
Tarrantos
www.masimas.com/tarrantos

8.45pm

David y Sara
Plays (Span.)
Teatre Gaudí Barcelona
www.teatregaudibarcelona.com

Wednesday**11****8pm**

Rei i senyor
Plays (Cat.)
Teatre Nacional de Catalunya
www.tnc.cat

8pm & 10pm

Dave Mitchell & Kike Angulo Quartet
Jazz
Jamboree
www.masimas.com/jamboree

8.30pm

Coriolà
Plays (Cat.)
Teatre Lliure Montjuïc
www.teatrelliure.com

8.45pm

David y Sara
Plays (Span.)
Teatre Gaudí Barcelona
www.teatregaudibarcelona.com

9pm

Andrea Motis & Joan Chamorro Group
Music. Jazz
Palau de la Música Catalana
www.palaumusica.cat

Date and time t.b.c

FC Barcelona - Getafe CF
Sport. Football
Camp Nou
www.fcbarcelona.cat

Thursday**12****8.30pm**

Coriolà
Plays (Cat. Span. & Eng. subtitles)
Teatre Lliure Montjuïc
www.teatrelliure.com

5pm

Rei i senyor
Plays (Cat.)
Teatre Nacional de Catalunya
www.tnc.cat

8pm

Historic Costa Brava Rally
In front of Montjuïc Fountains
www.rallycostabravahistoric.com

8pm & 10pm

Sindicato Ornette
Jazz
Jamboree
www.masimas.com/jamboree

8.30pm

Mateusz Borowiak
Classical music. Piano
L'Auditori
www.auditori.cat

9pm

Barcelona 4 Guitars
Spanish guitar
Basilica of Santa Maria del Pi
www.poemasl.es

9pm

Christina Rosenvinge
Barcelona Guitar Festival
Luz de Gas
www.festivalguitarrabcn.com

9pm

Radu Lupu
Music. Piano
Palau de la Música Catalana
www.palaumusica.cat

9pm

Rulo y Contrabanda
Barcelona
Guitar Festival
Teatre Coliseum
www.festivalguitarrabcn.com

9pm

Xavier le Roy / Product of Circumstances
Contemporary dance
Mercat de les Flors
www.mercatflors.cat

Friday**13****12 noon**

Brazilian Jazz Duo
Music. Jazz
Museu Europeu d'Art Modern
www.meam.es

7pm

Juan de la Rubia
Classical music. Organ
Palau de la Música Catalana
www.palaumusica.cat

7pm

Ópera y flamenco
Flamenco / Teatre Poliorama
www.operafiamenco.com

8pm

Rei i senyor
Plays (Cat.)
Teatre Nacional de Catalunya
www.tnc.cat

8pm & 10pm

Jon Robles Quintet
Jazz
Jamboree
www.masimas.com/jamboree

8.30pm

Coriolà
Plays (Cat.)
Teatre Lliure Montjuïc
www.teatrelliure.com

9pm

Albert Hammond
Music
Teatre Coliseum
www.theproject.es

9pm

Barcelona 4 Guitars
Spanish guitar
Basilica of Santa Maria del Pi
www.poemasl.es

9pm

Joan Colomo
Barcelona Guitar Festival
Luz de Gas
www.festivalguitarrabcn.com

9pm

Midori Performs Brahms
Classical music
L'Auditori
www.auditori.cat

9.30pm

Robert Glasper
Music. Jazz
L'Auditori
www.auditori.cat

Saturday**14****11am-7pm**

Book World
Family activity. Children's Literature Festival / Pl. de Joan Coromines, CCCB & MACBA
www.bcn.cat/barcelonacultura

5pm & 9.30pm

Rei i senyor
Plays (Cat.)
Teatre Nacional de Catalunya
www.tnc.cat

5.30pm

Skribo.
A Calligraphic Adventure
Music
CaixaForum
www.laCaixa.es/ObraSocial

6pm

Sardanes
Catalan popular dance
Pl. de la Catedral
www.bcn.cat

6pm & 10pm

Coriolà
Plays (Cat. Span. & Eng. subtitles)
Teatre Lliure Montjuïc
www.teatrelliure.com

7pm

Cobla Sant Jordi
Ciutat de Barcelona
Music. Cobla
Palau de la Música Catalana
www.palaumusica.cat

7pm

Midori Plays Brahms
Classical music
L'Auditori
www.auditori.cat

8pm & 10pm

De Diego Brothers
Jazz
Jamboree
www.masimas.com/jamboree

8.30pm

Montsalvatge
Music
L'Auditori
www.auditori.cat

9pm

Ekaterina Záyitseva
Spanish guitar
Basilica of Santa Maria del Pi
www.poemasl.es

9pm

La Canalla
Barcelona Guitar Festival
Luz de Gas
www.festivalguitarrabcn.com

9pm

The Seihos
Music. Pop
Palau de la Música Catalana
www.palaumusica.cat

9pm

Xavier le Roy / Low Pieces
Dance
Mercat de les Flors
www.mercatflors.cat

9.30pm

Pastora Soler
Music. Pop
Teatre Coliseum
www.theproject.es

Sunday**15****9.30pm**

El Corte Inglés Fun Run
Sport
Pl. de Catalunya
www.cursaelcorteingles.cat

10.30am-12 noon

Make a Bookmark
Family workshop
Poble Espanyol
www.poble-espanyol.com

11am

Midori Plays Brahms
Classical music
L'Auditori
www.auditori.cat

11am-7pm

Book World
Family activity.
Children's Literature Festival
Pl. de Joan Coromines, CCCB & MACBA
www.bcn.cat/barcelonacultura

11.15am

Sardanes
Catalan popular dance
Pl. de la Catedral
www.bcn.cat

12 noon

Castellers de Barcelona
Av. Portal de l'Àngel
www.castellersdebarcelona.cat

12 noon

Castellers de Sants
Creu Coberta - Llobet
www.castellersdebarcelona.cat

12 noon

Sardanes
Catalan popular dance
Av. de Gaudí
www.bcn.cat

12 noon

Skribo.
A Calligraphic Adventure
Music
CaixaForum
www.laCaixa.es/ObraSocial

12.30pm

Pinocchio, the Wooden Boy
Family puppet show
Poble Espanyol
www.poble-espanyol.com

6pm

Coriolà
Plays (Cat.)
Teatre Lliure Montjuïc
www.teatrelliure.com

6pm

Voices MEAM
Music
Museu Europeu d'Art Modern
www.meam.es

6pm

Rei i senyor
Plays (Cat.)
Teatre Nacional de Catalunya
www.tnc.cat

7pm

Xavier le Roy / Low Pieces
Contemporary dance
Mercat de les Flors
www.mercatflors.cat

8pm

The Waterboys
Barcelona Guitar Festival
Teatre Coliseum
www.festivalguitarrabcn.com

8pm & 10pm

Luthea Salom
Independent music, folk
Jamboree
www.masimas.com/jambree

9pm

Ekaterina Záyitseva
Spanish guitar
Basilica of Santa Maria del Pi
www.poemasl.es

9.30pm

Grand Flamenco Gala
Flamenco
Palau de la Música Catalana
www.operafamenco.com

Date and time t.b.c

RCD Espanyol - Valencia CF
Sport. Football
Estadi Cornellà - El Prat
www.rcdespanyol.com

Monday

16

8pm

WTF Jam Session
Jazz, funk, hip-hop / Jamboree
www.masimas.com/jamboree

8.30pm

Gerhard Quartet
Classical music / L'Auditori
www.auditori.cat

8.30pm, 9.30pm & 10.30pm

Son de aquí
Flamenco / Tarantos
www.masimas.com/tarantos

9pm

Bellydance Superstars
Oriental dance
Teatre Coliseum
www.theproject.es

9pm

Lorenzo Gatto
Classical music. Piano
Palau de la Música Catalana
www.palaumusica.cat

Tuesday

17

8pm & 10pm

Alias Mezquida
Jazz / Jamboree
www.masimas.com/jamboree

8.30pm

Swan Lake On Ice
Musical
Barcelona Teatre Musical
www.lets gocompany.com

8.30pm, 9.30pm & 10.30pm

Chanela
Flamenco / Tarantos
www.masimas.com/tarantos

8.45pm

David y Sara
Plays (Span.) / Teatre Gaudí
www.teatregaudibarcelona.com

9pm

The Talent of Youth
Classical music
L'Auditori
www.auditori.cat

9pm

Orfeo Pamplonès
Warsow Symphony
Classical music
Palau de la Música Catalana
www.palaumusica.cat

Wednesday

18

7pm

Ópera y flamenco
Flamenco
Teatre Poliorama
www.operafamenco.com

8pm

Rei i senyor
Plays (Cat.)
Teatre Nacional de Catalunya
www.tnc.cat

8pm & 10pm

David Giorgelli Trio
Blues / Jamboree
www.masimas.com/jamboree

8.30pm

Swan Lake On Ice
Musical
Barcelona Teatre Musical
www.lets gocompany.com

8.30pm, 9.30pm & 10.30pm

A media luz
Flamenco / Tarantos
www.masimas.com/tarantos

8.45pm

David y Sara
Plays (Span.) / Teatre Gaudí
www.teatregaudibarcelona.com

9pm

Ekaterina Záyitseva
Spanish guitar
Basilica of Santa Maria del Pi
www.poemasl.es

Thursday

19

5pm

Rei i senyor
Plays (Cat.) / TNC
www.tnc.cat

8pm

Marina Rossell
Barcelona Guitar Festival
Palau de la Música Catalana
www.festivalguitarrabcn.com

8pm & 10pm

Ernesto Aurignac Quartet
Jazz
Jamboree
www.masimas.com/jamboree

8.30pm

Swan Lake On Ice
Musical
Barcelona Teatre Musical
www.lets gocompany.com

8.30pm

Els jugadors
Plays (Cat.)
Teatre Lliure Gràcia
www.teatrelivre.com

9pm

Blanca Li / Macadam Macadam
Dance. Hip-hop
Mercat de les Flors
www.mercatflors.cat

21h

Ekaterina Záyitseva
Spanish guitar
Basilica of Santa Maria del Pi
www.poemasl.es

Friday

20

6pm

Bino Barros / Daniel Pinheiro
Music from Africa and Brazil
Museu Europeu d'Art Modern
www.meam.es

6pm & 10pm

Swan Lake On Ice
Musical
Barcelona Teatre Musical
www.lets gocompany.com

7pm

Ópera y flamenco
Flamenco
Teatre Poliorama
www.operafamenco.com

8pm

Rei i senyor
Plays (Cat.) / TNC
www.tnc.cat

8pm & 10pm

Arthur Kell Quartet
Jazz / Jamboree
www.masimas.com/jamboree

8.30pm

Els jugadors
Plays (Cat.)
Teatre Lliure Gràcia
www.teatrelivre.com

9pm

Blanca Li / Macadam Macadam
Dance. Hip-hop
Mercat de les Flors
www.mercatflors.cat

9pm

Niña Pastori
Music. Flamenco
Palau de la Música Catalana
www.palaumusica.cat

9pm

Please / U2 - 20th anniversary
Zootv Tour
Barcelona Guitar Festival
Teatre Coliseum
www.festivalguitarrabcn.com

9pm

Xavier Coll
Spanish guitar
Church of Sant Jaume
www.poemasl.es

9pm

Zahara
Barcelona Guitar Festival
Teatre Coliseum
www.festivalguitarrabcn.com

Saturday

21

5pm & 9.30pm

Rei i senyor
Plays (Cat.) / TNC
www.tnc.cat

5.30pm

Skribo. A Calligraphic Adventure
Music / CaixaForum
www.lacaixa.es/ObraSocial

6pm

Coral Cantiga de Barcelona
Music. Choral / L'Auditori
www.auditori.cat

6pm

Sardanes
Catalan popular dance
Pl. de la Catedral
www.bcn.cat

6pm & 10pm

Swan Lake On Ice
Musical
Barcelona Teatre Musical
www.lets gocompany.com

6pm & 10pm

Els jugadors
Plays (Cat.)
Teatre Lliure Gràcia
www.teatrelivre.com

7pm

Blanca Li / Macadam Macadam
Dance. Hip-hop
Mercat de les Flors
www.mercatflors.cat

7pm

Orquestra Nacional d'Andorra
Classical music
Palau de la Música Catalana
www.palaumusica.cat

8pm & 10pm

Eladio Reimon Quintet
Latin Jazz
Latin Jazz / Jamboree
www.masimas.com/jamboree

9pm

Laura Pausini
Music. Pop
Palau Sant Jordi
www.theproject.es

9pm

Xavier Coll
Spanish guitar
Basilica of Santa Maria del Pi
www.poemasl.es

Sunday

22

10am

Barcelona
Nike Firefighters' Run
Sport
www.cursabombers.com

10am

Sardanes
Catalan popular dance
Montjuïc Fountains
Pl. de les Quatre Columnes
www.bcn.cat

10.30am-12 noon

Make a Bookmark
Family workshop
Poble Espanyol
www.poble-espanyol.com

11.15am

Sardanes
Catalan popular dance
Pl. de la Catedral
www.bcn.cat

11.30am

One Piano, Four Dances and the Planets
Classical music
L'Auditori
www.auditori.cat

12 noon

Castells
Pl. de la Revolució de Setembre de 1868
www.castellersdebarcelona.cat

12 noon

Skribo.
A Calligraphic Adventure
Music / CaixaForum
www.lacaixa.es/ObraSocial

12.30pm

Pinocchio, the Wooden Boy
Family puppet show
Poble Espanyol
www.poble-espanyol.com

6pm

Swan Lake
Classical music
Palau de la Música Catalana
www.palaumusica.cat

6pm

Swan Lake On Ice
Musical
Barcelona Teatre / Musical
www.lets gocompany.com

6pm

Els jugadors
Plays (Cat.)
Teatre Lliure Gràcia
www.teatrelivre.com

6pm

VoicesMEAM
Music
Museu Europeu d'Art Modern
www.meam.es

6pm

Rei i senyor
Plays (Cat.) / TNC
www.tnc.cat

7pm

Blanca Li / Macadam Macadam
Dance. Hip-hop
Mercat de les Flors
www.mercatflors.cat

7pm

Lang Lang
Music. Piano / L'Auditori
www.auditori.cat

7.30pm

Catalan Choral Music: the Top Ten!
Music. Choral / L'Auditori
www.auditori.cat

8pm & 10pm

Blue Heart
Blues / Jamboree
www.masimas.com/jamboree

9pm

Xavier Coll
Spanish guitar
Basilica of Santa Maria del Pi
www.poemasl.es

9.30pm

Grand Flamenco Gala
Flamenco / Palau de la Música
www.operafamenco.com

Date and time t.b.c

FC Barcelona - Real Madrid
Sport. Football
Camp Nou
www.fcbarcelona.cat

Monday

23

8pm

WTF Jam Session
Jazz, funk, hip-hop
Jamboree
www.masimas.com/jamboree

9pm

Miguel Poveda
Music. Flamenco
Palau de la Música Catalana
www.theproject.es

Tuesday

24

8pm

The Magic Flute / Mozart
Music. Opera/Gran Teatre del Liceu
www.liceubarcelona.cat

8pm & 10pm

Matas-Lohikari-Falanga Trio
Jazz / Jamboree
www.masimas.com/jamboree

8.30pm

Swan Lake On Ice
Musical / Barcelona Teatre Musical
www.letscompany.com

8.30pm, 9.30pm & 10.30pm

Chanela
Flamenco / Tarantos
www.masimas.com/tarantos

8.45pm

David y Sara
Plays (Span.) / Teatre Gaudí
www.teatregaudibarcelona.com

9pm

Lorena McKernitt
Celtic music
Palau de la Música Catalana
www.palaumusica.cat

9.15pm

Ópera y flamenco
Flamenco / Teatre Poliorama
www.operaflamenco.com

Wednesday

25

8pm

Agost / Tracy Letts
Plays (Cat.) / TNC
www.tnc.cat

8pm

Rei i senyor
Plays (Cat.) / TNC
www.tnc.cat

8pm & 10pm

On Any Given Tuesday
Jazz / Jamboree
www.masimas.com/jamboree

8.30pm

Swan Lake On Ice
Musical
Barcelona Teatre Musical
www.letscompany.com

8.30pm

Els jugadors
Plays (Cat.) / Teatre Lliure Gràcia
www.teatrelliure.com

8.45pm

David y Sara
Plays (Cat.) / Teatre Gaudí
www.teatregaudibarcelona.com

9pm

Manuel González
Spanish guitar
Basilica of Santa Maria del Pi
www.poemasl.es

9.30pm

Grand Flamenco Gala
Flamenco
Palau de la Música Catalana
www.operaflamenco.com

Thursday

26

8pm

Agost / Tracy Letts
Plays (Cat.) / TNC
www.tnc.cat

8pm

The Magic Flute / Mozart
Music. Opera
Gran Teatre del Liceu
www.liceubarcelona.cat

8pm

Rei i senyor
Plays (Cat.) / TNC
www.tnc.cat

8pm & 10pm

The Jamboree Big Latin Band
Latin Jazz / Jamboree
www.masimas.com/jamboree

8.30pm

Swan Lake On Ice
Musical
Barcelona Teatre Musical
www.letscompany.com

8.30pm

Els jugadors
Plays (Cat.) / Teatre Lliure Gràcia
www.teatrelliure.com

8.30pm

Erik Bosgraaf & Francesco Corti
Classical music / L'Auditori
www.auditori.cat

9pm

Blanca Li / Macadam Macadam
Dance. Hip-hop
Mercat de les Flors
www.mercatflors.cat

9pm

Els Amics de les Arts
Barcelona Guitar Festival
Teatre Coliseum
www.festivalguitarrabcn.com

9pm

Hombres G
Barcelona Guitar Festival
Palau de la Música Catalana
www.festivalguitarrabcn.com

9pm

Kim Lenz & The Jaguar
Barcelona Guitar Festival
Sala Bikini
www.festivalguitarrabcn.com

9pm

Manuel González
Spanish guitar
Basilica of Santa Maria del Pi
www.poemasl.es

Friday

27

18 h

Mercadante / Bataglia
Music. Tango and folklore
Museu Europeu d'Art Modern
www.meam.es

6pm & 10pm

Swan Lake On Ice
Musical
Barcelona Teatre Musical
www.letscompany.com

7pm

Ópera y flamenco
Flamenco / Teatre Poliorama
www.operaflamenco.com

8pm

Agost / Tracy Letts
Plays (Cat.) / TNC
www.tnc.cat

8pm

Rei i senyor
Plays (Cat.) / TNC
www.tnc.cat

8pm & 10pm

Fly
Jazz / Jamboree
www.masimas.com/jamboree

8.30pm

Els jugadors
Plays (Cat.)
Teatre Lliure Gràcia
www.teatrelliure.com

9pm

Blanca Li / Macadam Macadam
Dance. Hip-hop
Mercat de les Flors
www.mercatflors.cat

9pm

The Most Symphonic Wagner
Classical music / L'Auditori
www.auditori.cat

9pm

Els Amics de les Arts
Barcelona Guitar Festival
Teatre Coliseum
www.festivalguitarrabcn.com

9pm

Manuel González
Spanish guitar
Church of Sant Jaume
www.poemasl.es

9pm

Philip Glass Ensemble
Music / Palau de la Música Catalana
www.palaumusica.cat

9pm

Shuarma
Barcelona Guitar Festival
Sala Bikini
www.festivalguitarrabcn.com

Saturday

28

10.30am-12 noon

Make a Bookmark
Family workshop / Poble Espanyol
www.poble-espanyol.com

12.30pm

Pinocchio, the Wooden Boy
Family workshop / Poble Espanyol
www.poble-espanyol.com

5pm & 9.30pm

Rei i senyor
Plays (Cat.) / TNC
www.tnc.cat

5.30pm

Skribo.
A Calligraphic Adventure
Music / CaixaForum
www.laCaixa.es/ObraSocial

6pm

The Magic Flute / Mozart
Opera / Gran Teatre del Liceu
www.liceubarcelona.cat

6pm

Sardanes
Catalan popular dance
Pl. de la Catedral
www.bcn.cat

6pm & 10pm

Swan Lake On Ice
Musical
Barcelona Teatre Musical
www.letscompany.com

6pm & 10pm

Els jugadors
Plays (Cat.) / Teatre Lliure Gràcia
www.teatrelliure.com

7pm

Blanca Li / Macadam Macadam
Dance. Hip-hop / Mercat de les Flors
www.mercatflors.cat

7pm

The Most Symphonic Wagner
Classical music / L'Auditori
www.auditori.cat

8pm

Agost / Tracy Letts
Plays (Cat.) / TNC
www.tnc.cat

8pm

Almqvist / Carlquist Quartet
Jazz / Jamboree
www.masimas.com/jamboree

9pm

Els Amics de les Arts
Barcelona Guitar Festival
Teatre Coliseum
www.festivalguitarrabcn.com

9pm

Manuel González
Spanish guitar
Basilica of Santa Maria del Pi
www.poemasl.es

9pm

Dvorák Music / Rakhmaninov
Classical music
Palau de la Música Catalana
www.palaumusica.cat

Sunday

29

11am

The Most Symphonic Wagner
Classical music / L'Auditori
www.auditori.cat

11.15am

Sardanes
Popular dance / Pl. de la Catedral
www.bcn.cat

12 noon

Castells
Marina / Provença
www.castellersdebarcelona.cat

12 noon

Sardanes
Popular dance / Pl. d'Eivissa
www.bcn.cat

12 noon

Skribo.
A Calligraphic Adventure
Music / CaixaForum
www.laCaixa.es/ObraSocial

6pm

Agost / Tracy Letts
Plays (Cat.) / TNC
www.tnc.cat

6pm

Swan Lake On Ice
Musical / Barcelona Teatre Musical
www.letscompany.com

6pm

Els jugadors
Plays (Cat.) / Teatre Lliure Gràcia
www.teatrelliure.com

6pm

MEAM Voices
Music
Museu Europeu d'Art Modern
www.meam.es

6pm

Rei i senyor
Plays (Cat.) / TNC
www.tnc.cat

6pm

Sofia Sinfonietta
Classical music
Palau de la Música Catalana
www.palaumusica.cat

6pm

Abbey Road / 50 Years with The Beatles
Barcelona Guitar Festival
Teatre Coliseum
www.festivalguitarrabcn.com

7pm

Blanca Li / Macadam Macadam
Dance. Hip-hop / Mercat de les Flors
www.festivalguitarrabcn.com

7pm

Mozartissimo
Classical music / L'Auditori
www.concertsabarcelona.cat

8pm & 10pm

The Bluesters
Blues / Jamboree
www.masimas.com/jamboree

9pm

Manuel González
Spanish guitar
Basilica of Santa Maria del Pi
www.poemasl.es

9.30pm

Grand Flamenco Gala
Flamenco
Palau de la Música Catalana
www.operaflamenco.com

Date and time t.b.c

RCD Espanyol - Sporting de Gijón
Football / Estadi Cornellà - El Prat
www.rcdespanyol.com

Monday

30

8pm

WTF Jam Session
Jazz, funk, hip-hop / Jamboree
www.masimas.com/jamboree

20.30, 21.30 & 22.30 h

Son de aquí
Flamenco / Tarantos
www.masimas.com/tarantos

9pm

Pedro J. González
Spanish guitar
Basilica of Santa Maria del Pi
www.poemasl.es

Museums and exhibition venues

1. Fundació Alorda Derksen

Aragó, 314 pral.
Tel. 932 726 250
www.fundacionad.com
◆ Passeig de Gràcia (L2, L3, L4)

2. Museu d'Arqueologia de Catalunya

Pl. de Santa Madrona, 39
Tel. 934 246 577
www.mac.cat
Closed Mon except public holidays
◆ Espanya (L1, L3)

3. Museu d'Art Contemporani de Barcelona (MACBA)

Pl. dels Àngels, 1
Tel. 934 120 810
www.macba.cat
Closed Tue except public holidays
◆ Catalunya (L1, L3)
Universitat (L1, L2)

4. Museu Nacional d'Art de Catalunya (MNAC)

Palau Nacional, Parc de Montjuïc
Tel. 936 220 376
www.mnac.cat
Closed Mon except public holidays
◆ Espanya (L1, L3)

5. Arts Santa Mònica

La Rambla, 7 - Tel. 933 162 810
www.artssantamonica.cat
Closed Mon
◆ Drassanes (L3)

6. Arxiu Fotogràfic de Barcelona

Pl. Pons i Clerch, 2, 2^a planta
Tel. 932 563 420
www.bcn.cat/arxiu/fotografic
Closed Sun & public holidays
◆ Arc del Triomf (L1), Jaume I (L4)

7. Arxiu Històric de la Ciutat de Barcelona

Santa Llúcia, 1
Tel. 933 181 195
www.bcn.cat/arxiu/arxiuhistoric
Closed Sun & public holidays
◆ Jaume I (L4), Liceu (L3)

8. Museu de Badalona

Pl. Assembla de Catalunya, 1
(Badalona) - Tel. 933 841 750
www.museudebadalona.cat
Closed Mon & public holidays
◆ Badalona Pompeu Fabra (L2)

9. Museu Barbier-Mueller d'Art Precolombí

Montcada, 14
Tel. 933 104 516
www.amigosprecolombino.es
Closed Mon except public holidays
◆ Jaume I (L4)

10. Museu Blau

Museu de Ciències Naturals de Barcelona
Pl. Leonardo da Vinci, 4-5
(Parc del Fòrum)
Tel. 932 566 002
www.museuciencies.bcn.cat
Closed Mon except public holidays
◆ El Maresme-Fòrum (L4)

11. Institut Botànic

Pg. del Migdia, s/n
Tel. 932 890 611
www.institutbotanic.bcn.cat
Closed Sat & Sun
◆ Espanya (L1, L3)

12. Jardí Botànic

Dr. Font i Quer, s/n
Tel. 932 564 160
www.museuciencies.bcn.cat
◆ Espanya (L1, L3)

13. CaixaForum

Av. de Francesc Ferrer i Guàrdia, 6-8
Tel. 934 768 600
www.lacaixa.es/ObraSocial
◆ Espanya (L1, L3)

14. Museu del Calçat

Pl. de Sant Felip Neri, 5
Tel. 933 014 533
Closed Mon
◆ Jaume I (L4), Liceu (L3)

15. La Capella

Hospital, 56 - Tel. 934 427 171
www.bcn.cat/lacapella
Closed Mon except public holidays
◆ Liceu (L3), Catalunya (L1, L3)

16. Museu de la Catedral

Pla de la Seu, s/n
Tel. 933 428 260
www.catedralbcn.org
◆ Jaume I (L4), Liceu (L3)

17. Museu de Cera

Ptge. de la Banca, 7
Tel. 933 172 649
www.museocerabcn.com
◆ Drassanes (L3)

18. Museu de Ceràmica

Palau Reial de Pedralbes
Av. Diagonal, 686
Tel. 932 563 465
www.museuceramica.bcn.cat
Closed Mon
◆ Palau Reial (L3)

19. CosmoCaixa

Isaac Newton, 26
Tel. 932 126 050
www.lacaixa.es/ObraSocial
Closed Mon except public holidays
◆ Avinguda Tibidabo / ▲ Blau

20. CCCB - Centre de Cultura Contemporània de Barcelona

Montalegre, 5 - Tel. 933 064 100
www.cccb.org
Closed Mon except public holidays
◆ Catalunya (L1, L3)
Universitat (L1, L2)

21. Fundació Fran Daurel

Av. de Francesc Ferrer i Guàrdia, 13
Poble Espanyol - Tel. 934 234 172
www.fundaciofrandaurel.com
◆ Espanya (L1, L3)

22. Museu Diocesà

Av. de la Catedral, 4
Tel. 933 152 213
Closed Mon
◆ Jaume I (L4), Liceu (L3)

23. Disseny Hub Barcelona (activitats temporals)

DHUB Montcada
Montcada, 12
Tel. 932 562 300
www.dhub-bcn.cat
Closed Mon except public holidays
◆ Jaume I (L4)

24. Disseny Hub Barcelona (exposició permanent)

DHUB - Museu de les Arts Decoratives i Museu Tèxtil i d'Indumentària
Palau Reial de Pedralbes
Av. Diagonal, 686
Tel. 932 563 465
www.dhub-bcn.cat / Closed Mon
◆ Palau Reial (L3)

25. Museu Etnològic

Pg. de Santa Madrona, 16-22
Parc de Montjuïc
Tel. 932 563 484
www.museuetnologic.bcn.cat
Closed Mon except public holidays
◆ Espanya (L1, L3)

26. Museu Egípc

València, 284
Tel. 934 880 188
www.museuegipci.com
◆ Passeig de Gràcia (L2, L3, L4)

27. Museu de l'Eròtica

La Rambla, 96 bis
Tel. 933 189 865
www.erotica-museum.com
◆ Catalunya (L1, L3), Liceu (L3)

28. Museu de l'Espoir

Dr. Melcior Colet
Buenos Aires, 56-58
Tel. 934 192 232
Closed Sat & Sun
◆ Hospital Clínic (L5)

29. Fundació Foto Colectania

Julian Romea, 6
Tel. 932 171 626
www.colectania.es
Closed Sat & Sun
◆ Fontana (L3), Diagonal (L3, L5)
◆ Gràcia

30. Can Framis

Roc Boronat, 116-126
Tel. 933 208 736
www.fundaciovilacasa.org
Closed Sat & Sun
◆ Glòries (L1), Llacuna (L4)

31. Museu del Futbol Club Barcelona

Av. Aristides Maillol
Tel. 934 963 608
www.fcbarcelona.cat
◆ Collblanc (L5), Maria Cristina (L3)

32. Casa-Museu Gaudí

Park Güell. Carretera del Carmel
Tel. 932 193 811
www.casamuseugaudi.org
◆ Lesseps (L3), Alfons X (L4)

33. Museu Geològic del Seminari

Diputació, 231
Tel. 934 541 600
www.bcn.cat/mediciencias/mgsb
Visites concertades
Closed Sat & Sun
◆ Universitat (L1, L2)

34. Fundació Francisco Godia

Diputació, 250
Tel. 932 723 180
www.fundacionfgodia.org
Closed Tue
◆ Passeig de Gràcia (L2, L3, L4)

35. MUHBA Plaça del Rei

Plaça del Rei, s/n
Tel. 932 562 122
www.museuhistoria.bcn.cat
Closed Mon except public holidays
◆ Catalunya (L1, L3), Jaume I (L4)

36. MIBA - Museu d'Idees i Invents de Barcelona

Ciutat, 7
Tel. 933 327 930
www.mibamuseum.com
Closed Mon except public holidays
◆ Catalunya (L1, L3), Jaume I (L4)

37. MUHBA El Call

Placeta de Manuel Ribé, s/n
Tel. 932 562 122
www.museuhistoria.bcn.cat
Closed Mon
◆ Jaume I (L4)

38. MUHBA Monestir de Pedralbes

Baixada del Monestir, 9
Tel. 932 562 122
www.museuhistoria.bcn.cat
Closed Mon
◆ Reina Elisenda

39. MUHBA Park Güell

Pavelló de Consergeria, Park Güell
Olot s/n
Tel. 932 562 122
www.museuhistoria.bcn.cat
◆ Lesseps (L3)

40. MUHBA Refugi 307

Nou de la Rambla, 169
Tel. 932 562 122
www.museuhistoria.bcn.cat
Closed Mon-Fri
◆ Paral·lel (L2, L3)

41. MUHBA Santa Caterina

Pl. Joan Capri
Tel. 932 562 122
www.museuhistoria.bcn.cat
Closed Sun
◆ Urquinaona (L1, L4)

42. MUHBA VII-la Joana

Ctra. de l'Església, 104
Vallvidrera - Tel. 932 562 122
www.museuhistoria.bcn.cat
Visites concertades
Closed Mon
◆ Baixador de Vallvidrera

43. Museu d'Història de Catalunya

Pl. de Pau Vila, 3
Tel. 932 254 700
www.mhcat.cat
Closed Mon
◆ Barceloneta (L4)

44. Teatre Museu del Rei de la Màgia

Jonqueres, 15
Tel. 933 197 393
www.elreydelamagia.cat
Closed Mon
◆ Urquinaona (L1, L4)

45. Museu Frederic Marès

Pl. Sant Iu, 5
Tel. 932 563 500
www.museumares.bcn.cat
Closed Mon
◆ Jaume I (L4)

46. Museu Marítim

Av. de les Drassanes, s/n
Tel. 933 429 920
www.mmb.cat
Partially closed for refurbishment
◆ Drassanes (L3)

47. Fundació Joan Miró

Parc de Montjuïc, s/n
Tel. 934 439 470
www.fundacionmiro-bcn.org
Cierra Lu no festivos
◆ Montjuïc,
◆ Paral·lel (L2, L3)

48. Museu Europeu d'Art Modern (MEAM)

Barra de Ferro, 5
Tel. 933 195 693
www.meam.es
Closed Mon
◆ Jaume I (L4), Liceu (L3)

49. Museu del Modernisme Català

Balmes, 48 - Tel. 932 722 896
www.mmcat.cat
◆ Passeig de Gràcia (L2, L3, L4)

50. Museu de la Moto de Barcelona

Carrer de la Palla, 10
Tel. 933 186 584
www.museumoto.com
Closed Wed except public holidays
◆ Liceu (L3)

51. Museu de la Música

L'Auditori. Lepant, 150
Tel. 932 563 650 - Closed Tue
www.museumusica.bcn.cat
◆ Marina (L1)

52. Museu Olímpic i de l'Esport

Joan Antoni Samaranch
Av. de l'Estadi, 60
Tel. 932 925 379
www.museuolimpicbcn.cat
Closed Mon except public holidays
◆ Espanya (L1, L3)

53. Palau Robert

Pg. de Gràcia, 107
Tel. 932 388 091
www.gencat.cat/probert
◆ Diagonal (L3, L5)

54. La Pedrera de CatalunyaCaixa

Provença, 261-265
Tel. 902 400 973
www.catalunyacaixa.com/obrasocial
◆ Diagonal (L3, L5)

55. Museu del Perfum

Pg. de Gràcia, 39
(interior Perfumeria Regia)
Tel. 932 160 121
www.museudelperfum.com
Closed Sun
◆ Passeig de Gràcia (L2, L3, L4)

56. Museu Picasso

Montcada, 15-23
Tel. 932 563 000
www.museupicasso.bcn.cat
Closed Mon except public holidays
◆ Jaume I (L4)
Liceu (L3)

57. Museu del Rock

Las Arenas de Barcelona, 4ª planta
Gran Via de les Corles
Catalanes, 373-385
Tel. 934 265 054
www.museudelrock.com
Closed Mon
◆ Espanya (L1, L3)

58. Basílica de la Sagrada Família

Mallorca, 401 - Tel. 932 073 031
www.sagradafamilia.cat
◆ Sagrada Família (L2, L5)

59. Fundació Suñol

Pg. de Gràcia, 98
Tel. 934 961 032
www.fundaciosunol.org
Closed Sun & public holidays
◆ Passeig de Gràcia (L2, L3, L4)

60. Fundació Antoni Tàpies

Aragó, 255
Tel. 934 870 315
www.fundaciotapias.org
Closed Mon
◆ Passeig de Gràcia (L2, L3, L4)

61. Museu dels Autòmats del Tibidabo

Parc d'Atraccions del Tibidabo
Tel. 932 117 942
www.tibidabo.net
☑ Tibidabo + 🚶 Blau + 🚡 Funicular

62. Espais Volart

Ausiàs March, 22
Tel. 934 817 985
www.fundaciovilacasas.com
Cierra Lu y festivos
◆ Urquinaona (L1, L4)

63. La Virreina Centre de la Imatge

La Rambla, 99
Tel. 933 161 000
www.bcn.cat/virreina-centre-de-la-imatge
Closed Mon
◆ Liceu (L3), Catalunya (L1, L3)

64. Museu de la Xocolata

Comerç, 36 (cantonada pl. Pons i Clerch) - Tel. 932 687 878
www.museudelaxocolata.com
◆ Jaume I (L4)
Arc de Triomf (L1)

Venues of Architectural Interest**65. Casa Amatller**

Passeig de Gràcia, 41
Tel. 934 877 217
www.amatller.org
Temporary closed
◆ Passeig de Gràcia (L2, L3, L4)

66. Casa Batlló

Passeig de Gràcia, 43
Tel. 932 160 306
www.casabatllo.cat
◆ Passeig de Gràcia (L2, L3, L4)

67. Mirador de Colom

Pl. Portal de la Pau, s/n
Tel. 933 025 224
www.barcelonaturisme.cat
◆ Drassanes (L3)

68. Palau Güell

Nou de la Rambla, 3-5
Tel. 934 725 775
www.palauguell.cat
Closed Mon
◆ Liceu (L3)

69. Pavelló Mies Van der Rohe

Av. Marquès de Comillas, s/n
Parc de Montjuïc - Tel. 934 234 016
www.miesbcn.com
◆ Espanya (L1, L3)

70. Castell de Montjuïc

Carretera de Montjuïc, 66
Tel. 933 298 613 - Closed Mon
www.bcn.cat/castelldemontjuic
☑ Paral·lel - Parc de Montjuïc

71. Poble Espanyol de Barcelona

Av. de Francesc Ferrer i Guàrdia, 13
Tel. 935 086 300
www.poble-espanyol.com
◆ Espanya (L1, L3)

Music**72. L'Auditori**

Lepant, 150 - Tel. 932 479 300
www.auditori.cat
◆ Marina (L1)

73. Gran Teatre del Liceu

La Rambla, 51-59 - Tel. 934 859 900
www.liceubarcelona.cat
◆ Liceu (L3)

74. Jamboree

Plaça Reial, 17 - Tel. 933 191 789
www.masimas.com/jamboree
◆ Liceu (L3)

75. Palau Dalmaes Espai Barroc

Montcada, 20 - Tel. 933 101 433
www.palaudalmases.com
◆ Jaume I (L4), Liceu (L3)

76. Palau de la Música Catalana

Palau de la Música, 4-6
Tel. 932 957 200
www.palaumusica.cat
◆ Urquinaona (L1, L4)

77. Church of Santa Anna

Rivadenedeyra, 3
www.artpegi.com
Guitar concerts
◆ Catalunya (L1, L3)

78. Church of Santa Maria del Pi

Pl. Pi, 7
www.poemas.es
Guitar concerts
◆ Catalunya (L1, L3), Liceu (L3)

79. Tarantos

Plaça Reial, 17 - Tel. 933 191 789
www.masimas.com/tarantos
◆ Liceu (L3)

Theatre and Dance**80. Mercat de les Flors**

Lleida, 59 - Tel. 934 261 875
www.mercatflors.cat
◆ Espanya (L1, L3)

81. Teatre Nacional de Catalunya

Plaça de les Arts, 1
Tel. 933 065 700
www.tnc.cat
◆ Marina (L1), Monumental (L2)

82. Teatre Gaudí Barcelona

Sant Antoni Maria Claret, 120
Tel. 936 035 152
www.teatregaudiibarcelona.com
◆ Sagrada Família (L2, L5)
Joanic (L4)

83. Teatre Lliure Gràcia

Montseny, 47
Tel. 932 892 770
www.teatrelivre.com
◆ Fontana (L3)

84. Teatre Lliure Montjuïc

Pg. de Santa Madrona, 40-46
Tel. 932 892 770
www.teatrelivre.com
◆ Espanya (L1, L3)
Poble Sec (L3)

85. Barcelona Teatre Musical

Av. Guardia Urbana, s/n. Old
Palau d'Esports
Tel. 902 33 22 11
Los Miserables (Musical)
◆ Espanya (L1, L3)

86. Teatre Poliorama

La Rambla, 115
Tel. 933 177 599
◆ Liceu (L3)

Leisure and Other Entertainments**87. Banyes àrabs Aire de Barcelona**

Pg. Picasso, 22 - Tel. 902 555 789
www.airedebarcelona.com
◆ Jaume I (L4)

88. IMAX Port Vell

Moll d'Espanya, s/n - Tel. 932 551 111
www.imaxportvell.com
◆ Drassanes (L3)

89. Parc d'Atraccions del Tibidabo

Pl. del Tibidabo, 3-4
Tel. 932 117 942
www.tibidabo.net
☑ Tibidabo + 🚶 Blau + 🚡 Funicular

90. PortAventura

Av. Alcalde Pere Molas Km. 2
Vila Seca (Tarragona)
Tel. 977 779 000
www.portaventura.es
☑ Renfe: PortAventura

91. Zoo de Barcelona

Parc de la Ciutadella, s/n
Tel. 902 457 545
www.zoobarcelona.cat
◆ Barceloneta (L4)

92. Tablao Flamenco El Cordobés

La Rambla, 35 - Tel. 933 175 711
www.tablaocordobes.com
◆ Liceu (L3)

93. Palacio del Flamenco

Balmes, 139 - Tel. 932 187 237
www.palaciodelflamenco.com
◆ Diagonal (L3, L5)

94. Tablao Flamenco Nervión

Princesa, 2 - Tel. 933 152 103
www.restaurantnervion.com
◆ Jaume I (L4)

The Other Story of Saint George

historiesdelgotic.mnac.cat



CATALONIA 1400

The International Gothic Style

Bernat Martorell. *Saint George Bearing the Torture*, c. 1434-1437.
Paris, Musée du Louvre, Département des Peintures © RMN/Daniel Arnaudet

EXHIBITION 29th March – 15th July 2012

M^NAC
MUSEU NACIONAL
D'ART DE CATALUNYA

Palau Nacional
Parc de Montjuïc
Barcelona
www.mnac.cat

MORITZ

RECOMMENDS

Every Thursday from
APRIL 19TH (9pm)
Caseta del Migdia de Montjuïc
CARGOLS & FLAMENCU
www.lacaseta.org

Every tuesday in **APRIL (8.30pm)**
600 & RUMBA
Entertainment, food and rumba
in Barcelona
www.pummbarcelona.cat

APRIL 19TH – APRIL 29TH
MECAL International Short Film Festival of Barcelona
www.mecalbcn.org

paytoys



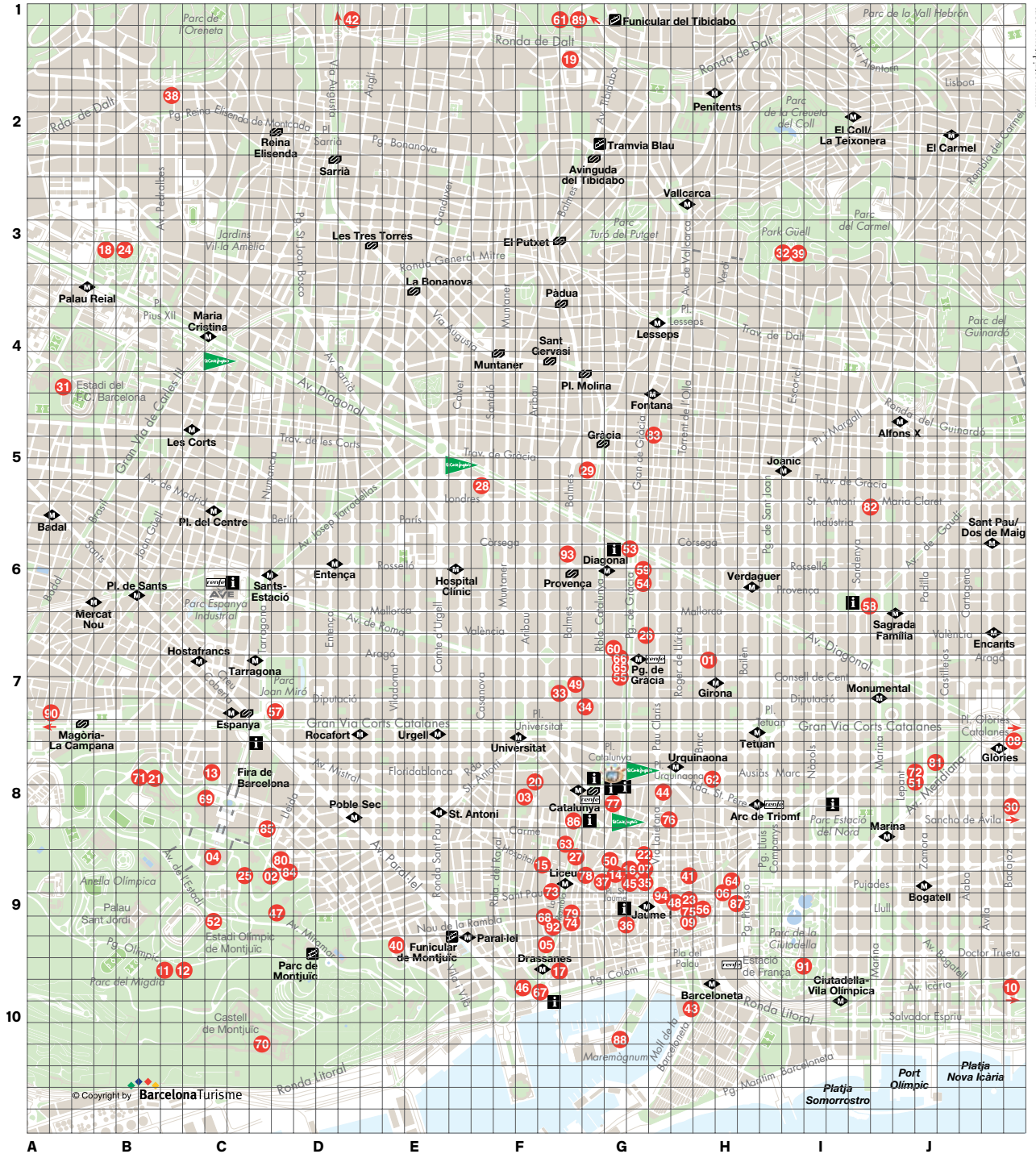
Map

You can find us at
[facebook.com/visitbarcelona](https://www.facebook.com/visitbarcelona)
twitter.com/visitbarcelona
[instagram.com/visitbarcelona](https://www.instagram.com/visitbarcelona)
[youtube.com/visitbarcelona](https://www.youtube.com/visitbarcelona)

In collaboration with
Ajuntament de Barcelona
 Institut de Cultura

Published by
BarcelonaTurisme

Turisme de Barcelona can accept no responsibility for any changes for any schedules. Paper 100% recycled.



www.visitbarcelona.com



Francisco de Goya, *The Clothed Maja*, 1797-1798, Oil on canvas, Photographic Archive, Museo Nacional del Prado, Madrid

EXHIBITION UNTIL 24 JUNE

Goya

Lights and shadows

FREE ENTRY

Av. de Francesc Ferrer i Guàrdia, 6-8 • www.laCaixa.es/ObraSocial

Exhibition jointly organised by
 "la Caixa" Foundation
 and the Museo Nacional del Prado



MUSEO NACIONAL DEL PRADO

10 years
CaixaForum



Obra Social "la Caixa"